



Bad Urach, 12th december 2008

Recall Durin Race 80/100

Identification Durin Race fork without serial number:

Your Durin Race fork doesn't have a serial number anymore?

Now you have to check by the form of the lower leg, whether your fork is affected by the recall.

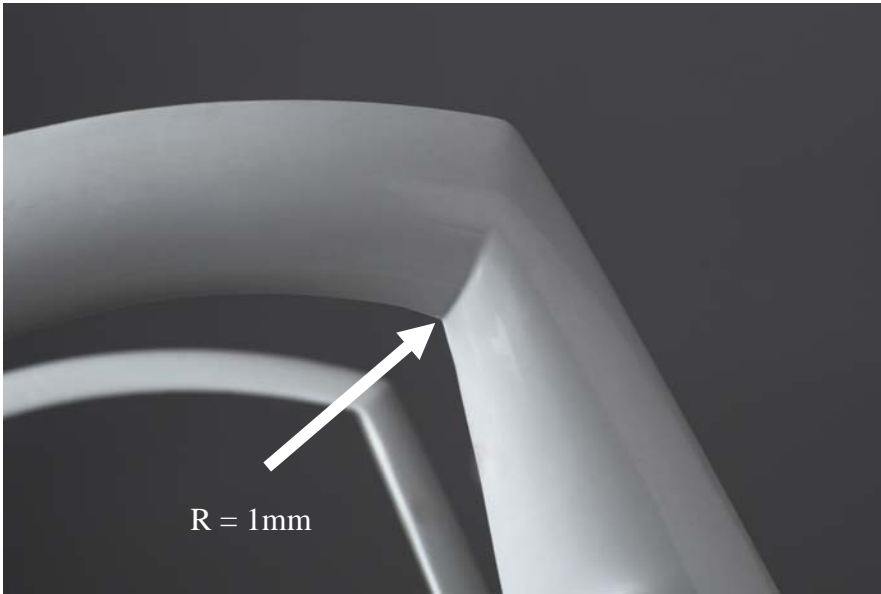
Check the inner radius of the front arch in between the horizontal and vertical portion, see arrows.



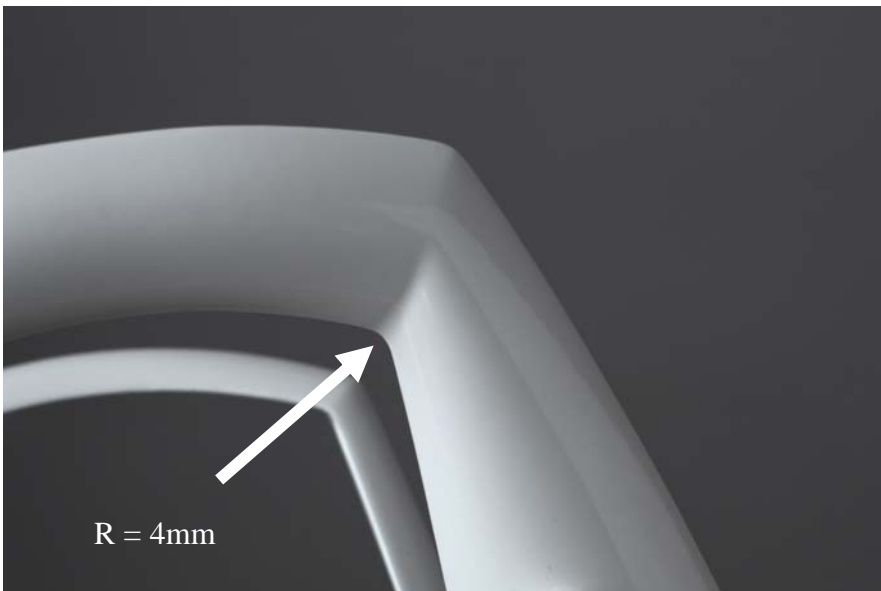
ATTENTION: We emphasize that this recalls concerns Durin Race forks (MD 80R and MD 100R) in both disc only and canti-disc (for V-brakes) version!



Durin Race forks affected by the recall have a radius of 1mm.
Good forks, not affected by the recall, have a bigger radius of 4mm.



affected by the recall



not affected by the recall, fork is o.k.!

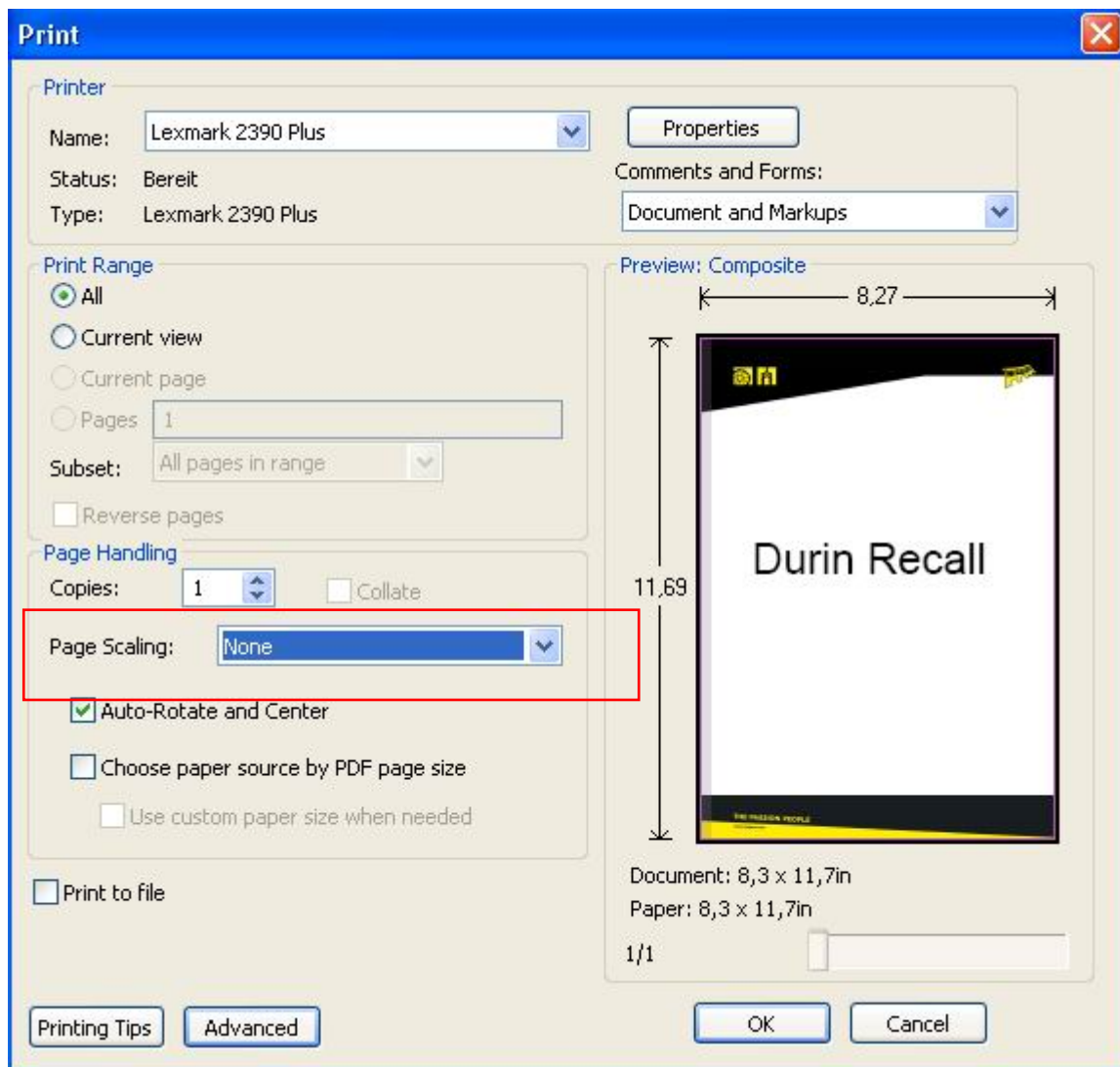
page 2



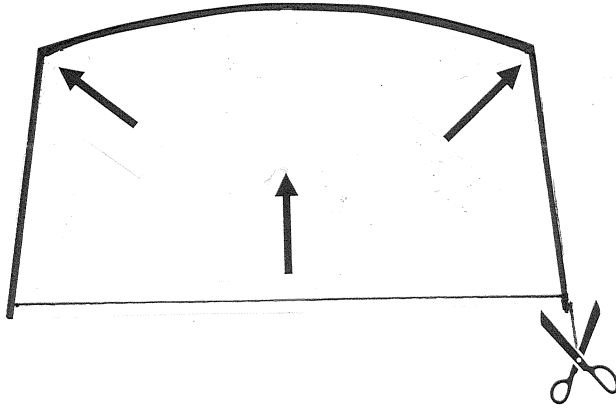
You are not sure after the a/m check whether your fork is concerned by the recall or not?

Please check in this case the following alternative:

Print out the gauge on the following page. Before doing this make sure to adjust the page scaling in the print menu of your Acrobat Reader software to „none“ as shown in the red frame! **This step is absolutely necessary to guarantee that the size of the gauge is the correct one for the following check! If this condition isn't met the size of the gauge is faulty which will lead to faulty results!**



Glue the printed gauge on harder paper or carton board before using it. This will prevent it from bending when it is fitted in between the front arch. Please cut exactly the outer line, especially the two upper corners. Slide the prepared gauge from the lower side into the front arch as shown in the following pictures.



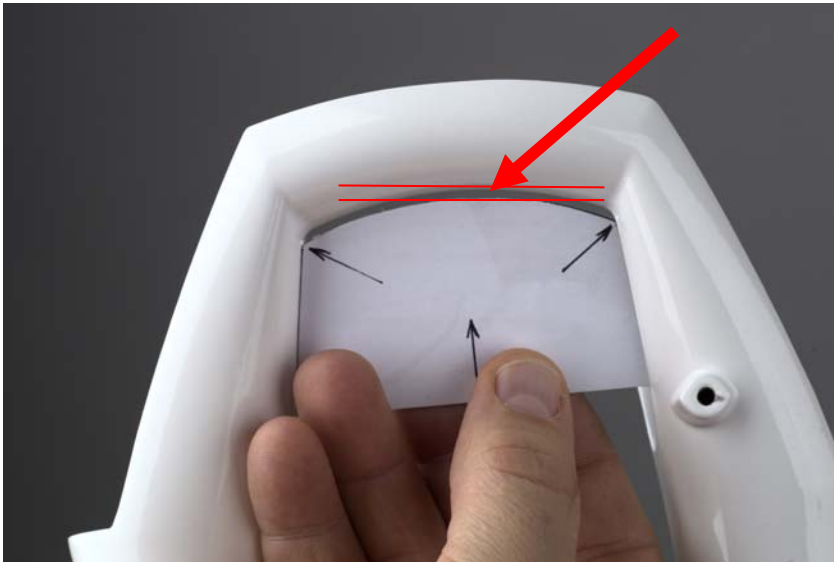
Please print out this page!

Before doing this make sure to adjust the page scaling in the print menu of your Acrobat Reader software to "none" as shown in the red frame! (c.f. previous page). This step is absolutely necessary to guarantee that the size of the gauge is the correct one for the following check! If this condition isn't met the size of the gauge is faulty which will lead to faulty results!

Glue the printed gauge on harder paper or carton board before using it. This will prevent it from bending when it is fitted in between the front arch. Please cut exactly the outer line, especially the two upper corners. Slide the prepared gauge from the lower side into **the front arch** as shown in the following pictures.



If you can't slide the gauge all the way into the arch, a gap of 2 to 3mm can be seen, see arrow, then your Durin Race fork is o.k. and not affected by the recall.



with gap, not affected by the recall

If the gauge fits exactly into the arch, your Durin Race fork is NOT o.k. and is affected by the recall! Do not ride any longer with such a fork!



NO gap, affected by the recall !!



Now you have identified, if your Durin Race fork is affected by the recall or not. Please choose now [on page 2 of the recall site on magura.com](#) the respective button and follow the instructions.

If ever you still feel unsure whether your fork is affected by the recall or not we advise you because of safety reasons to send us your fork for a closer check. Follow for this the instructions mentioned above.

Please accept our apologies for any inconvenience caused. Thank you very much for your support and understanding. In case your fork is concerned by the recall we will try our utmost to speed up the repair at MAGURA to send you back your repaired fork as fast as possible. Happy trails with your Magura Durin Race fork!

Your MAGURA Passion People Team.